

PARTS CAP



FONTAINE®
FIFTH WHEEL

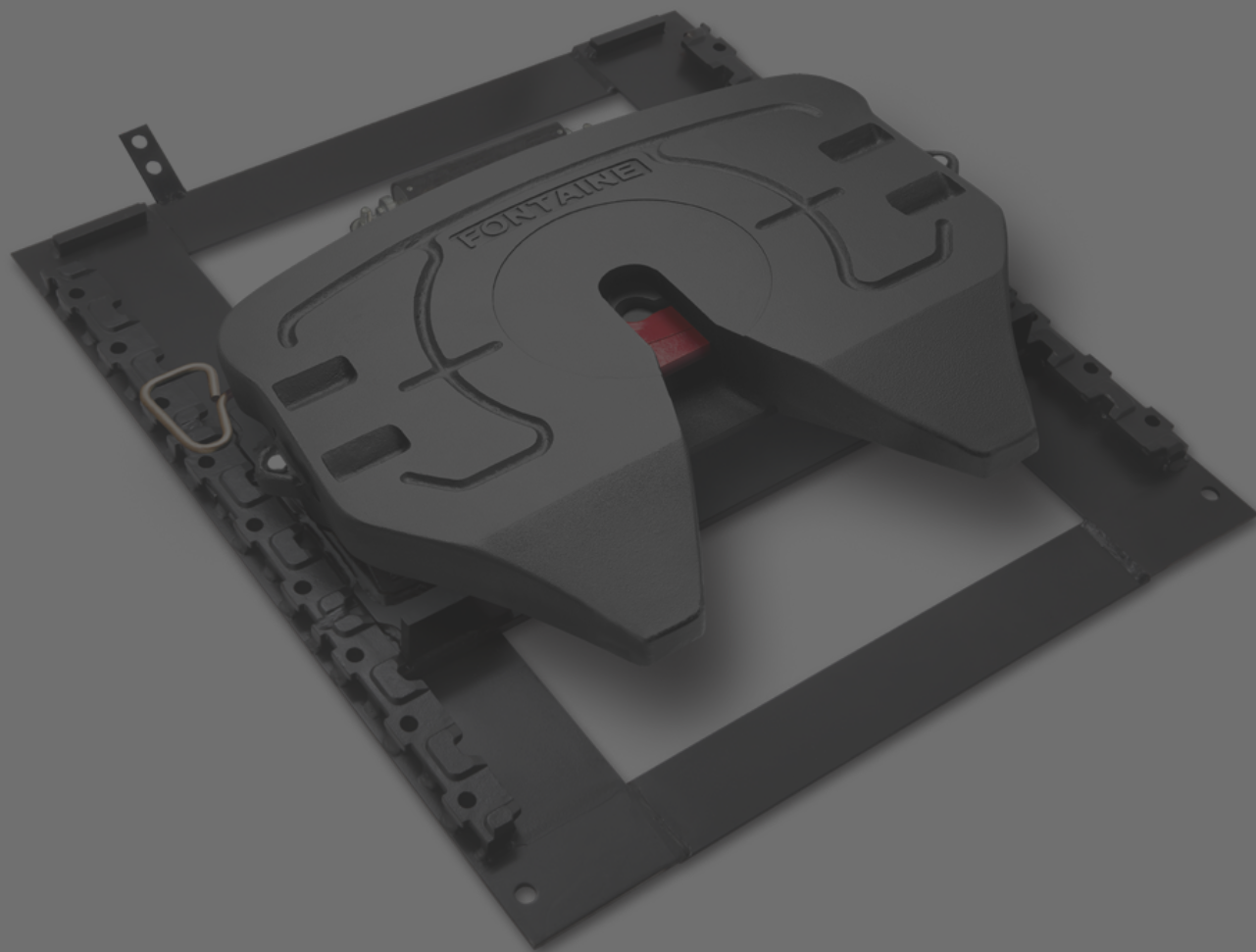
Privacy Information

We like to continuously improve our website and enable you to use it in the best possible way. For this, we work with our partners to improve your experience. You may opt-out at any time. For detailed information about personal information we collect and third parties having access to it, please select "More Information" or refer to our Privacy Policy.

[Legal Notice & Privacy Policy](#) [More Information](#)

Do not sell or share my personal information

OK



Moderate-Duty Complete Assembly - SL7LWB675024

Privacy Information

We like to continuously improve our website and enable you to use it in the best possible way. For this, we work with our partners to improve your experience. You may opt-out at any time. For detailed information about personal information we collect and third parties having access to it, please select "More Information" or refer to our Privacy Policy.

[Legal Notice & Privacy Policy](#)

Do not sell or share my personal information

Powered by Usercentrics Consent Management

The world's only self-adjusting, trigger-activated lock

Automatically resets the lock to accommodate wear

Easy lock to open ... only 65 lbs of pull force

Industry's best defense against false coupling

Our Mobile App: http://www.fifthwheel.com/mobile_app.html

Top Movers - Fontaine Fifth Wheel

Part Number	Description 1	Description 2	Application Information
FON KITRPR6000L	Minor Jaw/Wedge Repair Kit	Includes: Jaw/Wedge and 3 main top plate springs	Repairs 6000/7000/UNT top plates
FON KIT RX67NTL	Major Rebuild Kit	Includes: All moving pieces inside top plate	Rebuilds 6000/7000/UNT top plates
FON KIT PUL 6000L	Pull handle kit	Includes: Pull handle and hardware	Repairs 6000/7000/UNT top plates
FON BSH LLB TEMP	2-Piece bushing setup (Pair)	Includes: Upper/Lower bushings & bracket liner	Repairs: ATB, LWB, NWB, BSL, BSM, PMA, PML brackets
FON BSH 150	1-Piece bushing setup (Pair)	Includes: Includes pair of bushings	Repairs: AWB, AWX, MWS, PS5, FMA brackets
FON SLTPL6000	Standard-Duty Stamped Steel top-plate	50,000 vertical load, 150,000 drawbar pull	Great for on-highway LTL trucks
FON SLTPL7000	Moderate Duty Cast Steel top-plate	55,000 vertical load, 150,000 drawbar pull	Great for on-highway moderate duty applications
FON SL6LWB675024	Standard-Duty Complete Assembly	Includes: Stamped steel top plate, bracket and slide rail	6.75 mounted height, 24 slide travel (bolts to out-board angles)

Privacy Information

We like to continuously improve our website and enable you to use it in the best possible way. For this, we work with our partners to improve your experience. You may opt-out at any time. For detailed information about personal information we collect and third parties having access to it, please select "More Information" or refer to our Privacy Policy.

[Legal Notice & Privacy Policy](#)

Do not sell or share my personal information

Powered by Usercentrics Consent Management

About Fontaine Fifth Wheel

Leading Fifth Wheel manufacturer for class 8 trucks. Offering complete assemblies, top-plates, repair kits, brackets and slide rails. Top Plate features No-Slack Lock technology.

Why switch to No-Slack®

- Superior fifth wheel technology that self-adjusts to give you a snug, secure connection

- Automatically adjusts for kingpin wear so you can switch from trailer to trailer hassle-free

- Reduces shock inputs into the frame when braking and accelerating

- Extends the life of components and reduces maintenance costs

- Drivers love the smoother ride and the easy-topull Handle

- The industries best defense against false coupling

About www.fifthwheel.com

Search parts, track orders, cross reference, where to buy, media library, live chat, spec my truck

Fontaine Field Sales Team Coverage Map (<https://www.fifthwheel.com/pdfs/literature/LT-090%20Sales%20Team%20Map.pdf>)

Warranty Information

Basic Limited Warranty

Except as provided herein, Fontaine® Fifth Wheel Company ("Fontaine") warrants to the first user only ("First User") that each new Fontaine fifth wheel sold in North America will be free from defects in material and workmanship for five years from the date of manufacture by Fontaine.

This Limited Warranty does not cover failures due to:

1. Use in loads that are beyond federal and state highway limits or in special overweight load permits.
2. Improper installation of the fifth wheel (see appropriate Fontaine Instruction Handbook for proper installation procedures).
3. Normal wear.

Privacy Information

We like to continuously improve our website and enable you to use it in the best possible way. For this, we work with our partners to improve your experience. You may opt-out at any time. For detailed information about personal information we collect and third parties having access to it, please select "More Information" or refer to our Privacy Policy.

Legal Notice & Privacy Policy

Do not sell or share my personal information

Powered by Usercentrics Consent Management

Fontaine cannot guarantee the service life of any fifth wheel since service life can vary with application, usage, maintenance, environment, and other factors beyond Fontaine's control.

Written authorization from Fontaine must be obtained before replacing or returning any part under this Limited Warranty. All requests for reimbursement must be submitted within 45 days of the repair.

Except as provided herein, Fontaine warrants the performance of each new Fontaine fifth wheel sold in North America that is used in a "standard duty application" for five years from the date of manufacture by Fontaine. A "standard duty application" requires that (i) the vehicle is used 100% on highways with more than 30 miles (48.3 kilometers) between each couple, (ii) the vehicle does not exceed a gross combined vehicle weight of 95,000 pounds (43,000 kilograms), (iii) the total number of towed axles does not exceed two and (iv) the road type is maintained concrete or asphalt.

Fontaine warrants that each fifth wheel covered hereunder shall operate as described in the appropriate Fontaine Instruction Handbook and that the locking mechanism (jaw & wedge) will wear properly on the trailer kingpin when the fifth wheel is adjusted in accordance with Fontaine's instructions. Fontaine fifth wheels are designed and manufactured for use with SAE 2" trailer kingpins that conform to SAE specification (SAE J700, February 1993) and are subject to the wear limits of SAE specification (SAE J2228, June 1993).

Last updated: Thursday, 03 November 2022 01:38 PM

[^Back to Top](#)

Copyright © Daimler Truck North America LLC. [Privacy Statement, Legal Notices and Terms \(https://daimler-trucksnorthamerica.com/privacy-policy\)](https://daimler-trucksnorthamerica.com/privacy-policy). [Privacy Settings](#)

All rights reserved. Daimler Truck North America LLC is a [Daimler \(http://www.daimler.com/\)](http://www.daimler.com/) company.

Privacy Information

We like to continuously improve our website and enable you to use it in the best possible way. For this, we work with our partners to improve your experience. You may opt-out at any time. For detailed information about personal information we collect and third parties having access to it, please select "More Information" or refer to our Privacy Policy.

[Legal Notice & Privacy Policy](#)

Do not sell or share my personal information

Powered by Usercentrics Consent Management