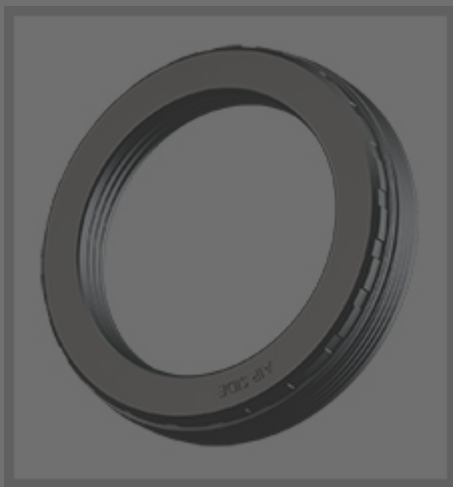


PARTS CAP



ALLIANCE PARTS



Alliance Seals and Hub Components

Alliance Seals and Hub Components are genuine OEM service parts.

Privacy Information

We like to continuously improve our website and enable you to use it in the best possible way. For this, we work with our partners to improve your experience. You may opt-out at any time. For detailed information about personal information we collect and third parties having access to it, please select "More Information" or refer to our Privacy Policy.

[Legal Notice & Privacy Policy](#) [More Information](#)

Do not sell or share my personal information

OK

For commercial vehicle that was built in the last ten years, PreSet wheel hubs were likely installed as standard equipment. When it's time for service, opt for genuine Alliance Seal & Spacer Kits and bring them back to their PreSet factory settings.

PreSet/PreSet Plus Hub Rebuilt Kits

Take the opportunity to press the reset button with less cost, labor, and downtime. And, you can count on quality, long-lasting Alliance components in each kit.

Wheel Seal

With a multi-zone labyrinth design and low-friction barrier, contaminants can't get past, providing superior durability and protection against the elements.

PreSet Plus Spindle Nut

Designed specifically for PreSet® and PreSet Plus® Hub Assemblies, Alliance spindle nuts ease hub installation, provide infinite adjustability, and improve clamp load retention.

Top Movers - Alliance Aftermarket Wheel End Components

Part Number	Part Description
ABP 10081520	SEAL AND SPACER KIT, R DRIVE
ABP 10045887	SEAL SERVICE KIT R DRIVE
ABP 10045888	SEAL SERVICE KIT TN TRAILER
ABP 10081518	SEAL AND SPACER KIT, FF FRONT
ABP 10045885	SEAL SERVICE KIT FF FRONT
ABP 10045889	SEAL SERVICE KIT TP TRAILER
ABP 10036548	ATP PRESET PLUS SPINDLE NUT FF STR FLAT
ABP 10082970	SEAL ASSEMBLY, R DRIVE, HYBRID
ABP 10036551	ATP PRESET PLUS SPINDLE NUT R DRIVE
ABP 10081522	SEAL AND SPACER KIT, TP TRAILER

Privacy Information

We like to continuously improve our website and enable you to use it in the best possible way. For this, we work with our partners to improve your experience. You may opt-out at any time. For detailed information about personal information we collect and third parties having access to it, please select "More Information" or refer to our Privacy Policy.

[Legal Notice & Privacy Policy](#)

Do not sell or share my personal information

Powered by Usercentrics Consent Management

Spindle Nuts: One Year/100,000 miles

Last updated: Wednesday, 22 May 2024 09:25 PM

[^Back to Top](#)

Copyright © Daimler Truck North America LLC. [Privacy Statement, Legal Notices and Terms \(https://daimler-trucksnorthamerica.com/privacy-policy\)](https://daimler-trucksnorthamerica.com/privacy-policy). [Privacy Settings](#)

All rights reserved. Daimler Truck North America LLC is a [Daimler \(http://www.daimler.com/\)](http://www.daimler.com/) company.

Privacy Information

We like to continuously improve our website and enable you to use it in the best possible way. For this, we work with our partners to improve your experience. You may opt-out at any time. For detailed information about personal information we collect and third parties having access to it, please select "More Information" or refer to our Privacy Policy.

[Legal Notice & Privacy Policy](#)

Do not sell or share my personal information

Powered by Usercentrics Consent Management