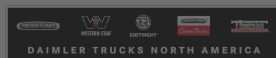
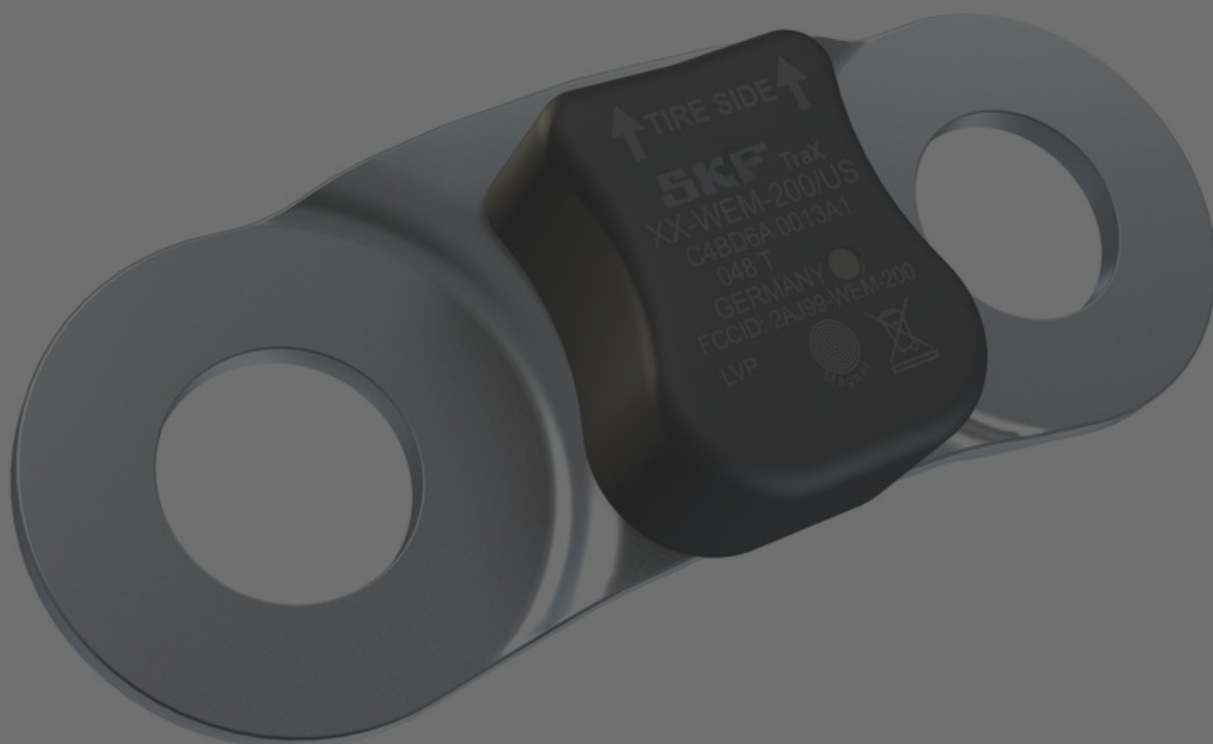


Log In 



PARTSCAP

SKF®



Privacy Information

We like to continuously improve our website and enable you to use it in the best possible way. For this, we work with our partners to improve your experience. You may opt-out at any time. For detailed information about personal information we collect and third parties having access to it, please select "More Information" or refer to our Privacy Policy.

[Legal Notice & Privacy Policy](#) [More Information](#)

Do not sell or share my personal information

OK

Powered by Usercentrics Consent Management

after being activated.

SKF Website (<https://vehicleaftermarket.skf.com/us/en/product-assortment/heavy-duty/wheel-end/trax-wheel-end-monitor/contact-us-trax>)

Product Highlights

How you can benefit

The TraX WEM will help you to increase safety and reduce your costs.

- Avoid unplanned downtime - impending bearing failures will be indicated in advance
- Increased safety - a significant number of wheel problems will be reduced
- Reduced cost of ownership -no preventive wheel bearing replacement
- The most economical retrofittable solution
- Can be paired with any telematics system

YouTube Link

Tutorial - How to install the SKF Tr...



Top Movers - Trax Wheel end monitor

Media not found

Privacy Information

We like to continuously improve our website and enable you to use it in the best possible way. For this, we work with our partners to improve your experience. You may opt-out at any time. For detailed information about personal information we collect and third parties having access to it, please select "More Information" or refer to our Privacy Policy.

[Legal Notice & Privacy Policy](#)

Do not sell or share my personal information

Powered by Usercentrics Consent Management

What is the best wheel end monitor for my truck?

The SKF TraX wheel end monitoring system is a device that will help you to detect damages of truck and trailer wheel bearing (raceway spalling) in an early stage. Check out how SKF took care of every detail to ensure the safety and quality you deserve. SKF guarantees an OE performance and a reliable product so that you simply enjoy the ride.

The next generation in proactive WEM

- Detects bearing failures well in advance, preventing an unplanned stop
- Detects extreme heat on the wheel and produces an alert to indicate a potential thermal event
- Prevents breakdowns and expensive repairs
- Bearings are not replaced until they reach their end of life, saving unnecessary maintenance
- Application easily integrates with existing wheel end systems
- Near-realtime alerts assist in reducing the threat of suffering a wheel-off, increasing traffic safety

Follow SKF Aftermarket YouTube Channel

View helpful technical videos and assembly instructions on our SKF YouTube channel in a clear and informative way

YouTube Link: <https://www.youtube.com/@SKFAftermarket> (<https://www.youtube.com/@SKFAftermarket>)

Follow SKFAutomotive Social Channels

Instagram Link: <https://www.instagram.com/skfautomotive/?hl=en> (<https://www.instagram.com/skfautomotive/?hl=en>)

Facebook Link: <https://www.facebook.com/SKFAutomotive/> (<https://www.facebook.com/SKFAutomotive/>)

Contact SKF Technical Support to help resolve your automotive problems.

Helpline@skf.com

Last updated: Tuesday, 19 September 2023 08:47 PM

[^Back to Top](#)

Copyright © Daimler Truck North America LLC. [Privacy Statement](#), [Legal Notices and Terms](#) (<https://daimler->

Privacy Information

We like to continuously improve our website and enable you to use it in the best possible way. For this, we work with our partners to improve your experience. You may opt-out at any time. For detailed information about personal information we collect and third parties having access to it, please select "More Information" or refer to our Privacy Policy.

[Legal Notice & Privacy Policy](#)

Do not sell or share my personal information

Powered by Usercentrics Consent Management